



Cert. No. LRQ 0963008

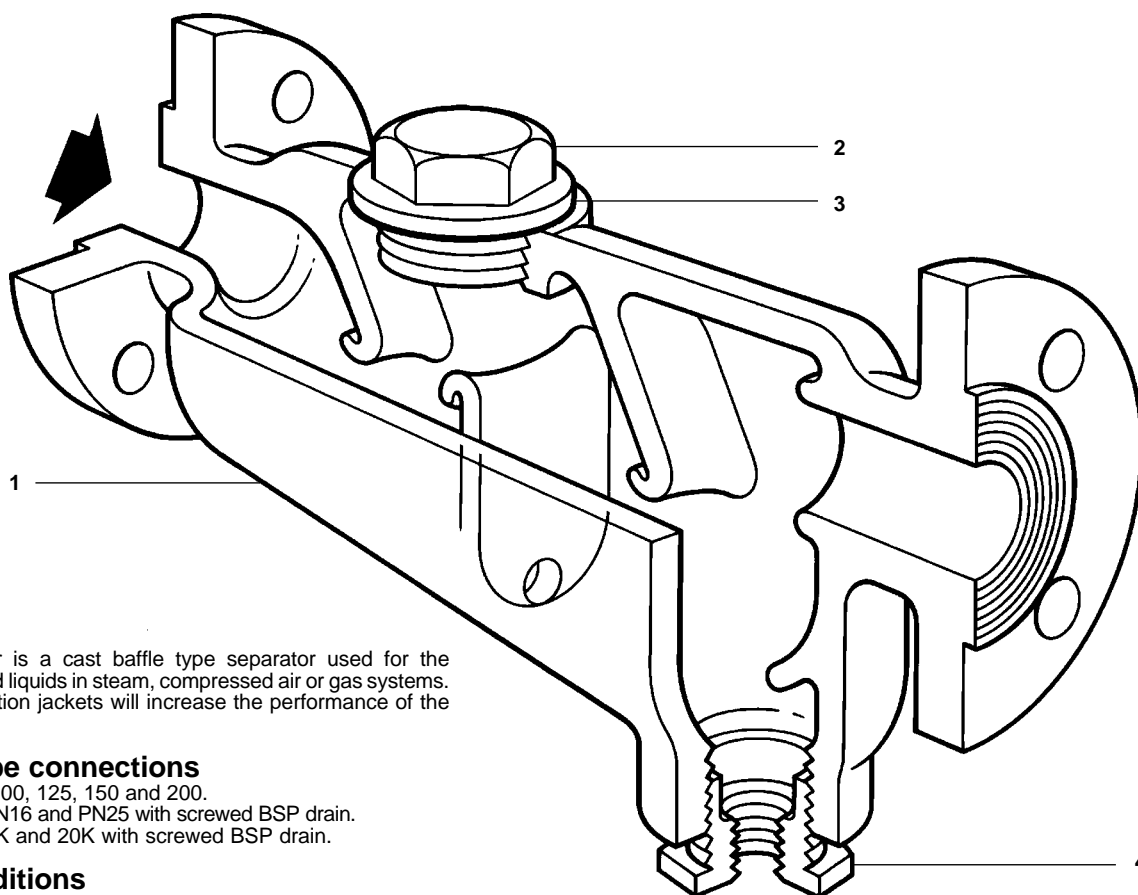
ISO 9001

spirax/sarco

TI-P023-26

ST Issue 7

S13 SG Iron Separator



Description

The S13 separator is a cast baffle type separator used for the removal of entrained liquids in steam, compressed air or gas systems. The fitting of insulation jackets will increase the performance of the separator.

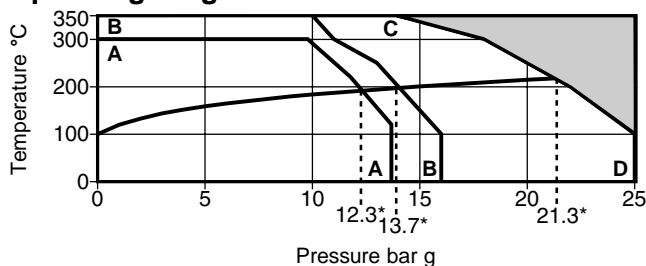
Sizes and pipe connections

DN40, 50, 65, 80, 100, 125, 150 and 200.
Flanged BS 4504 PN16 and PN25 with screwed BSP drain.
Flanged JIS/KS 10K and 20K with screwed BSP drain.

Limiting conditions

Body design conditions	PN25
PMA - Maximum allowable pressure	25 bar g
TMA - Maximum allowable temperature	350°C
	PN25 37.5 bar g
	PN16 24 bar g
Designed for a maximum cold hydraulic test pressure of:	JIS/KS 20K 37.5 bar g
	JIS/KS 10K 20.4 bar g

Operating range



The product must not be used in this region.

* PMO Maximum operating pressure when used for steam service.

A - A Flanged JIS 10K
B - B Flanged PN16
B - C - D Flanged PN25 and JIS 20K

Materials

No.	Part	Material
1	Body	SG iron DIN 1693 GGG40 ASTM a395
2	Plug	Carbon steel 1.0460 (C22.8)
3	Gasket	Reinforced exfoliated graphite
4	Drain reducing bush	Forged carbon steel ASTM A105

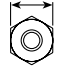

Certification

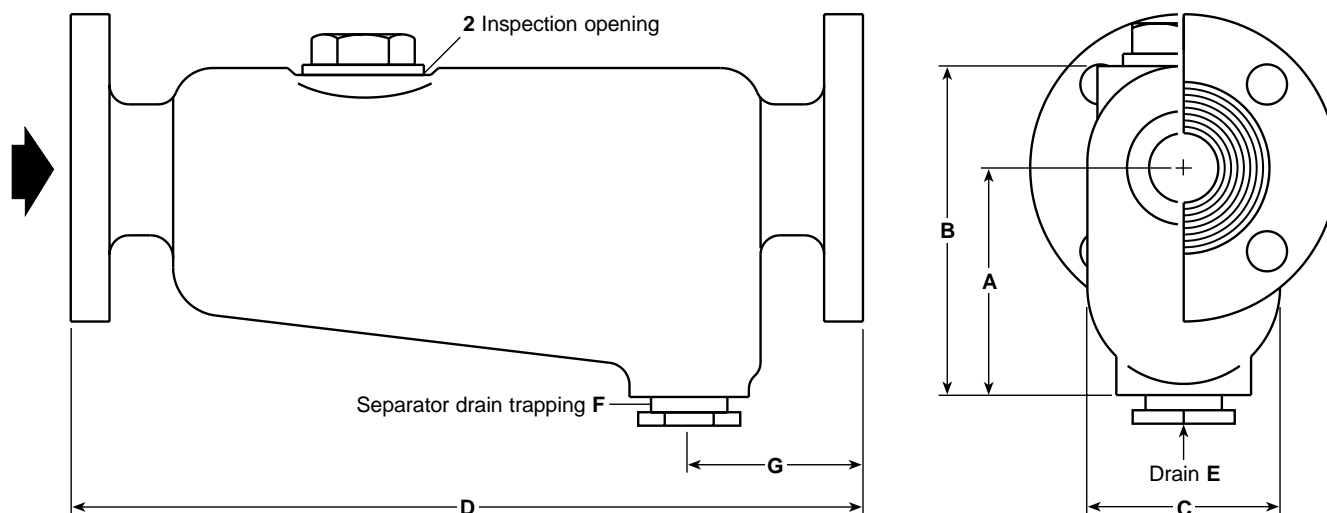
For sizes DN40 to 80 certification is available to EN 10204 2.2.
For sizes DN100 to 200 certification is available to EN 10204 3.1.B.
Note: All certification/inspection requirements must be stated at the time of order placement.

Dimensions, weight and volumes (approximate) in mm, kg and litres

Size	A	B	C	D	E	F	G	Weight	Volume
DN40	111	156	89	365	½"	1"	94	14	1.6
DN50	146	205	117	456	½"	1"	98	25	3.2
DN65	178	249	146	406	¾"	1½"	98	28	4.6
DN80	178	252	152	483	1"	1½"	98	36	6.5
DN100	223	315	197	692	1"	1½"	118	60	13.5
DN125	226	397	381	706	1"	1½"	121	128	38.5
DN150	226	397	381	706	1"	1½"	121	130	42.5
DN200	308	502	426	762	1½"	1½"	140	190	68.0

Recommended tightening torques

Item	Size	 or  mm	N m
2	DN40	46 A/F M56	150 - 165
	DN50	46 A/F M56	150 - 165
	DN65	46 A/F M56	150 - 165
	DN80	60 A/F M72	190 - 210
	DN100	60 A/F M72	190 - 210
	DN125	60 A/F M72	190 - 210
	DN150	60 A/F M72	190 - 210
DN200	60 A/F M72	190 - 210	



Safety information, installation and maintenance

For full details see the Installation and Maintenance Instructions (IM-P023-55) supplied with the product.
Install in a horizontal pipeline with the drain directly below.

Note: To ensure that any separated liquid is drained away quickly, a suitable liquid drainer steam trap must be connected to the drains connection.

Disposal

This product is recyclable. No ecological hazard is anticipated with the disposal of this product, providing due care is taken.

How to order

Example: 1 off DN50 Spirax Sarco S13 separator with SG iron body flanged to BS 4504 PN16.