



Cert. No. LRQ 0963008

ISO 9001

SG13 Brass Sight Glass

Description

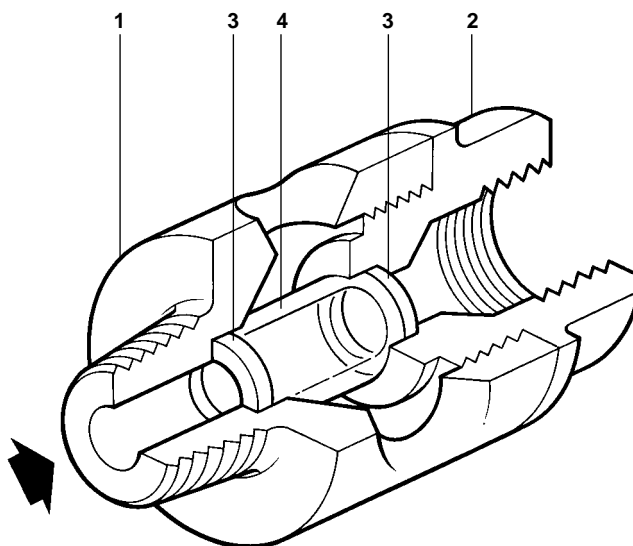
The SG13 is a maintainable brass multi-window sight glass with a cylindrical viewing area and screwed connections. The sight glass monitors the discharge downstream of steam traps in pressurised condensate return lines. It is screwed directly into the steam trap providing a modular monitoring system, thus eliminating the need for a connecting nipple, minimising joints and potential leak paths. The sight glass can also be installed in process lines to provide a visual indication of flow.

Sizes and pipe connections

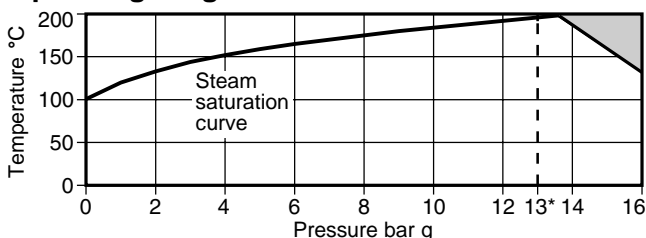
½", ¾" and 1" screwed BSP male taper/female parallel to BS 21 or screwed NPT male/female to ANSI B 1.20.1.

Limiting conditions

Body design conditions	PN16
PMA - Maximum allowable pressure	16 bar g
TMA - Maximum allowable temperature	200°C
PMO - Maximum operating pressure	13 bar g
TMO - Maximum operating temperature	200°C
Minimum operating temperature	-15°C
Designed for a maximum cold hydraulic test pressure of 24 bar g	



Operating range



The product must not be used in this region.

*PMO Maximum operating pressure (recommended) 13 bar g.

Materials

No.	Description	Material
1	Body	Brass BS 2874 CZ 121
2	End connection	Brass EN 12165 CW617N
3	Sight tube gasket	Virgin PTFE/fluorocarbon
4	Sight glass tube	Borosilicate glass

Certification

This product is available with certification to EN 10204 2.2.
Note: All certification/inspection requirements must be stated at the time of order placement.

K_v value

Size	½"	¾"	1"
K _v	2.5	2.5	2.5
For conversion	C _v (UK) = K _v x 0.97		C _v (US) = K _v x 1.17

Dimensions/weights (approximate) in mm and kg

Size	A	B	Weight
1/2"	41	78.0	0.42
3/4"	41	89.5	0.53
1"	41	98.0	0.75

Safety information

See IM-S32-04 which is supplied with the product for full details.

Installation

For more detailed installation instructions please refer to IM-S32-04 which is supplied with the product.

The tapered thread of the sight glass is screwed directly into the discharge side of the steam trap. Although the sight glass can be fitted in any plane, installation and flow direction will be dictated by the design and operation of the steam trap. The sight glass should be installed in a part of the line where failure of the glass will not result in harm to personnel or plant.

Warning:

Under certain conditions corrosive elements in condensate can affect the inside face of the sight tube, particularly where caustic alkali and hydrofluoric acid are present. It is recommended that the sight glass is periodically checked for thinning of the sight tube. If there is evidence of thinning or erosion damage then the sight tube should be replaced immediately. Always wear eye protection when viewing the contents of the sight glass.

Reasonable steps should be taken to protect personnel from injury in the unlikely event that the sight tube breaks.

Maintenance

For more detailed maintenance instructions please refer to IM-S32-04 which is supplied with the product.

All work must be carried out by a suitably competent person. Before starting work ensure that suitable tools are available. Use only Spirax Sarco replacement parts.

How to renew the sight glass assembly:

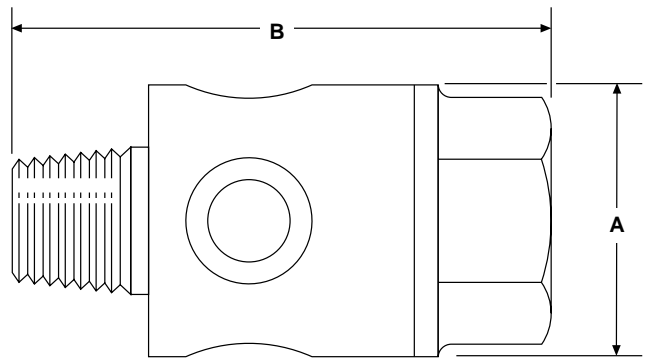
- After isolation remove the sight glass from the pipeline.
- Unscrew the end connection from the body and remove the sight tube.
- Take out the old gaskets taking care not to damage the seating face and carefully clean out the recesses.
- Fit the new gaskets which are supplied with the sight tube.
- Ensure that the sight tube is aligned correctly within the body when tightening the end connection. Misalignment may cause the edge of the sight tube to fracture.
- Refit the sight glass into the pipeline.
- After maintenance ensure that the system is fully functional.

Disposal

See IM-S32-04 which is supplied with the product for full details. The product is recyclable. No ecological hazard is anticipated with disposal of this product providing due care is taken. However if the recycling process involves a temperature approaching 315°C caution is advised regarding decomposition of the virgin PTFE / fluoro carbon sight tube gasket.

How to order

Example: 1 off 1/2" Spirax Sarco SG13 sight glass having screwed BSP connections.



Spare parts

The spare parts available are shown in heavy outline. Parts drawn in broken line are not supplied as spares.

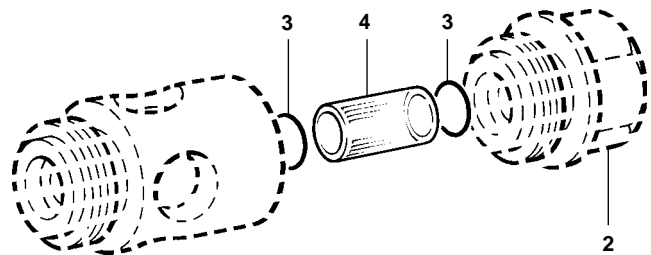
Available spare

Sight glass assembly	3 (2 off), 4
----------------------	--------------


How to order spares

Always order spares by using the description given in the column headed 'Available spare'. Since the sight glass assembly is the same for all three sizes, it will always be :-

Example: 1 - Sight glass assembly for a Spirax Sarco SG13 sight glass.



Recommended tightening torques

Item	Size		N m
2	1/2" - DN15	32 A/F	35 - 40
	3/4" - DN20	36 A/F	35 - 40
	1" - DN25	46 A/F	35 - 40