



Cert. No. LRQ 0963008

ISO 9001

SG253 Sight Glass

Description

The SG253 is a SG iron double window sight glass with flanged connections.

Sizes and pipe connections

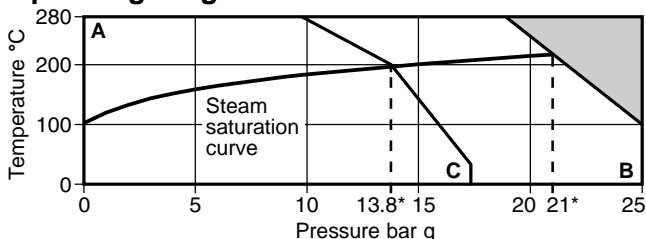
DN15, 20, 25, 32, 40 and 50

Flanged BS 4504 (DIN) PN25 and BS 1560 (ANSI) Class 150.

Limiting conditions

Body design conditions	PN25 and ANSI 150	
PMA - Maximum allowable pressure	PN25	25 bar g
	ANSI Class 150	17.2 bar g
TMA - Maximum allowable temperature	280°C	
PMO - Maximum operating pressure	PN25	21 bar g
	ANSI Class 150	13.8 bar g
TMO - Maximum operating temperature	280°C	
Minimum operating temperature	-10°C	
Designed for a maximum cold hydraulic test pressure of:	PN25	38 bar g
	ANSI Class 150	30 bar g

Operating range



The product must not be used in this region.

*PMO Maximum operating pressure when used for steam service.

A - B Flanged BS 4504 (DIN) PN25

A - C Flanged BS 1560 (ANSI) Class 150

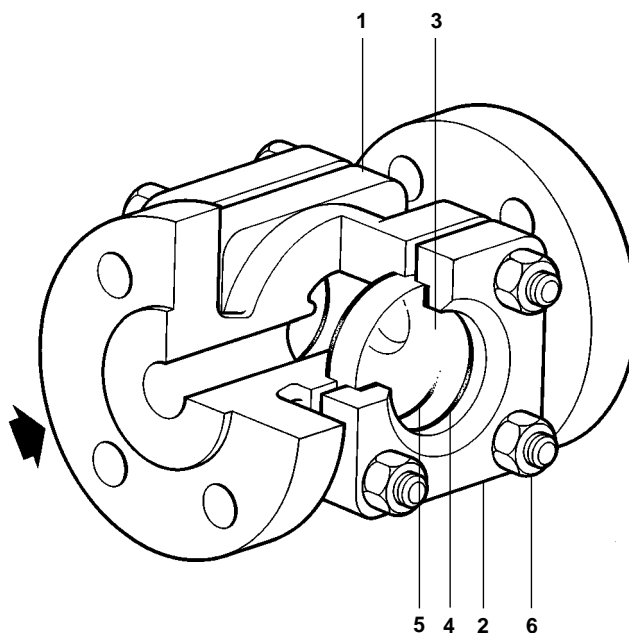
Material

No.	Part	Material	
1	Body	SG iron	DIN 1693 GGG 40.3
2	Cover	SG iron	DIN 1693 GGG 40.3
3	Window	Borosilicate glass	DIN 7080
4	Top gasket	Reinforced exfoliated graphite	
5	Bottom gasket	Reinforced exfoliated graphite	
6	Cover studs	Steel	BS 4439 Gr. 8.8
	Cover nuts	Steel	BS 3692 Gr. 8

Certification

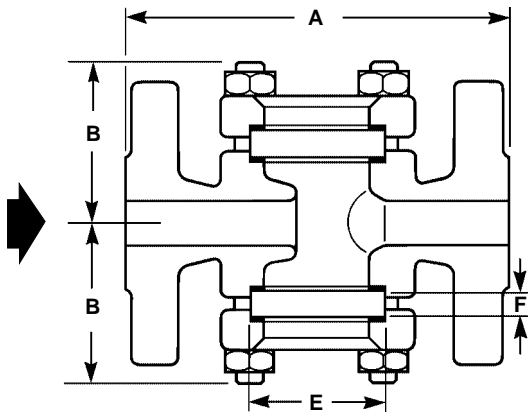
The product is available with certification to EN 10204 2.2 for body and cover as standard and EN 10204 3.1.B if specified.

Note: All certification/inspection requirements must be stated at the time of order placement.



Dimensions / weights (approximate) in mm and kg

Size	PN25 ANSI 150		B	E	F	Weight
	A	A				
DN15	130	126	55	45	10	3.2
DN20	150	142	55	45	10	4.1
DN25	160	152	70	63	12	5.0
DN32	180	175	70	63	12	5.9
DN40	200	199	85	80	15	9.1
DN50	230	228	85	80	15	10.9



Safety information

For full details see the Installation and Maintenance Instructions (IM-S32-04) supplied with the product.

Pressure

Before attempting any maintenance of the sight glass, consider what is or may have been in the pipeline. Ensure that any pressure is isolated and safely vented to atmospheric pressure before attempting to maintain the sight glass. This is easily achieved by fitting Spirax Sarco depressurisation valves type DV (see separate literature for details). Do not assume that the system is depressurised even when a pressure gauge indicates zero.

Temperature

Allow time for temperature to normalise after isolation to avoid the danger of burns and consider whether protective clothing (including safety glasses) is required.

Isolation

Consider whether closing isolating valves will put any other part of the system or personnel at risk. Dangers might include; isolation of vents, protective devices or alarms. Ensure isolation valves are turned on and off in a gradual way to avoid system shocks.

Installation

For full details see the Installation and Maintenance Instructions (IM-S32-04) supplied with the product.

The unit should be fitted on the outlet of a steam trap, on blast discharge types at least 1 m from the trap. The sight glass should be installed in a part of the line where failure of the glass could not result in harm to personnel or plant.

Maintenance

For full details see the Installation and Maintenance Instructions (IM-S32-04) supplied with the product.

Warning: In some applications condensate can act as a solvent for glass. It is recommended that the glass window is periodically checked for thinning. If there is any evidence of thinning then the glass should be replaced immediately:

- Unscrew cover nuts and remove old gaskets and windows.
- Carefully clean recess.
- Refit new gaskets and windows and, ensure that the thick bottom gasket is fitted under the glass window and the thin gasket on top.
- Replace cover and cover nuts and tighten.

Disposal

The product is recyclable. No ecological hazard is anticipated with disposal of this product providing due care is taken.

How to order

Example: 1 off Spirax Sarco DN20 SG253 sight glass having an SG iron body and removable toughened glass windows.

Spare parts

The spare parts available are shown in heavy outline. Parts drawn in broken line are not supplied as spares.

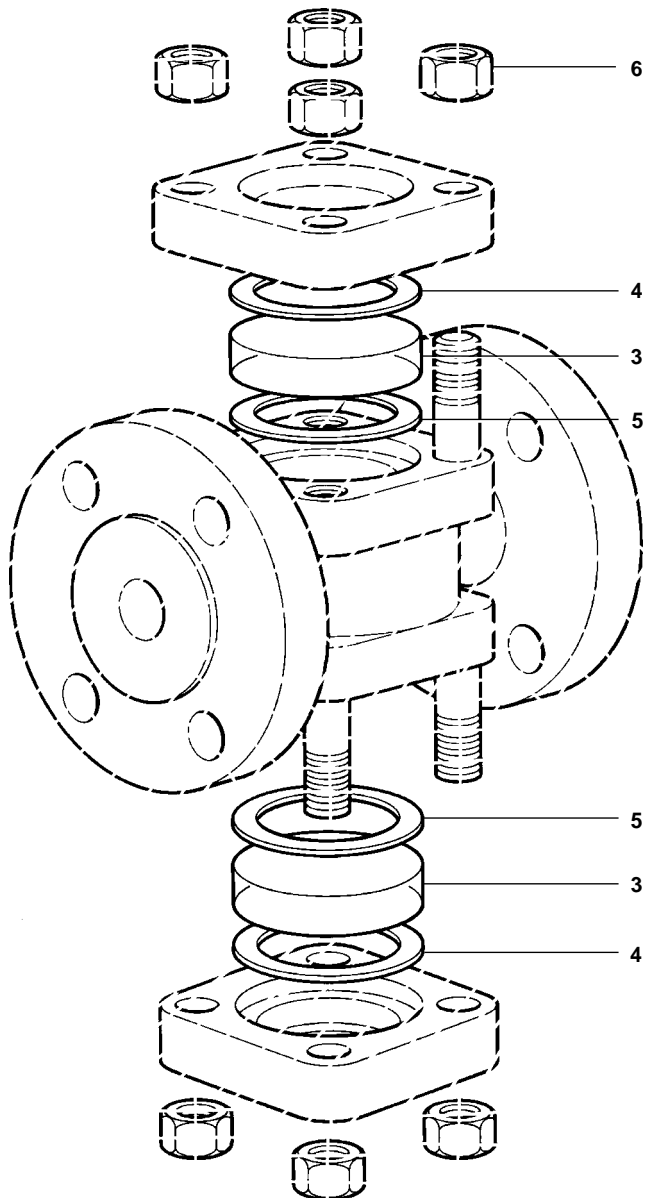
Available spares

Set of windows and gaskets	3, 4, 5
Set of gaskets	4, 5


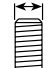
How to order spares

Always order spares by using the description given in the column headed 'Available spares' and state the size and type of the sight glass.

Example: 1 - Set of windows and gaskets for a Spirax Sarco SG253 sight glass.



Recommended tightening torques

Item	Size	Qty	or		N m
					
6	DN15-20	8	17 A/F	M10 x 30	12
	DN25-32	8	17 A/F	M10 x 35	24
	DN40-50	8	17 A/F	M10 x 40	40