

APT10 and APT14 Automatic pump traps

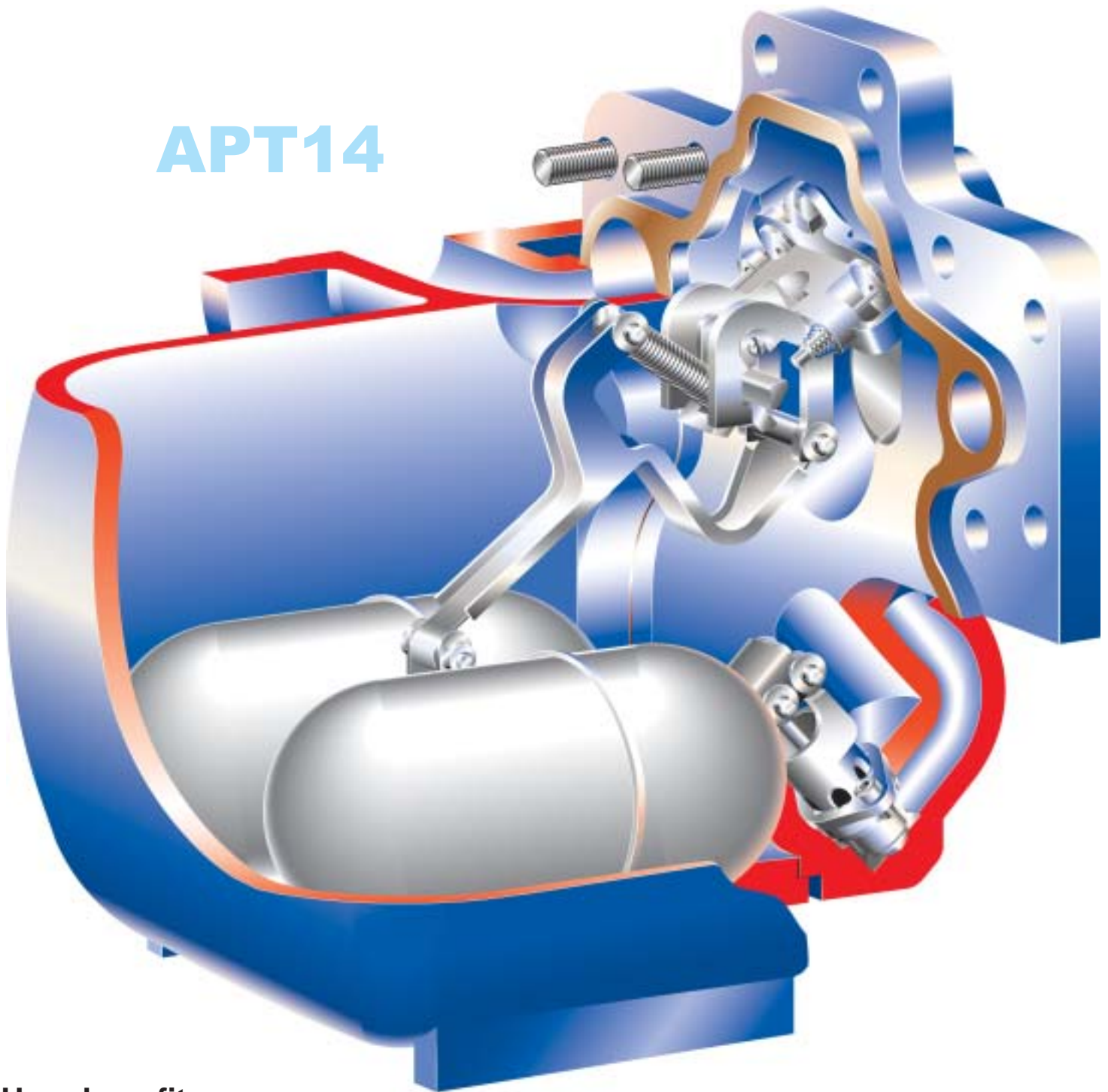
for effective condensate drainage
and removal



spirax
/ **sarco**

An innovative solution for effective heat

APT14



User benefits

- Self-contained compact unit.
- Operates with 0.2 m installation head from the base of the pump.
- Convenient installation to low mounted process equipment.
- Removes condensate under all load conditions, even vacuum.
- Requires no electrical power - suitable for hazardous environments.
- High capacity in one simple product package.
- Available with EN 10204 3.1.B certification as standard.
- Can be supplied with TÜV approval.
- Spirax Sarco's guarantee of worldwide technical support, knowledge and service.

exchanger drainage

APT - Automatic pump trap

For over 50 years, Spirax Sarco has been involved with the design and manufacture of products for efficient condensate management. We have now developed a compact, condensate drainage system in a simple-to-install product.

The APT has been designed to remove condensate from steam heat exchangers and process plant under all operating conditions, and forms an integral part of the condensate removal process. It is available in two easy-to-specify options:

APT10 - for loads up to 735 kg/h and the **APT14** - for loads up to 4 000 kg/h.

Compact design which contains all the equipment needed to drain or remove condensate for all load conditions.

Innovative patent applied for low profile mechanism.

All stainless steel internals, with low profile robust stainless steel floats.

Low resistance swing type inlet check valve.

High integrity trapped cover gasket.

Positive snap action pump mechanism with replaceable valves and seats.

High capacity two stage trap module plus precision ball outlet check valve.

Mechanisms operate with as little as 200 mm installation head from the base of the pump.

SG iron GGG 40.3 and A395 body and cover 3.1.B certifiable. Designed in accordance with DIN and ASME standards, the APT14 is also available with TÜV approval.

Available connections:

APT10 and APT14

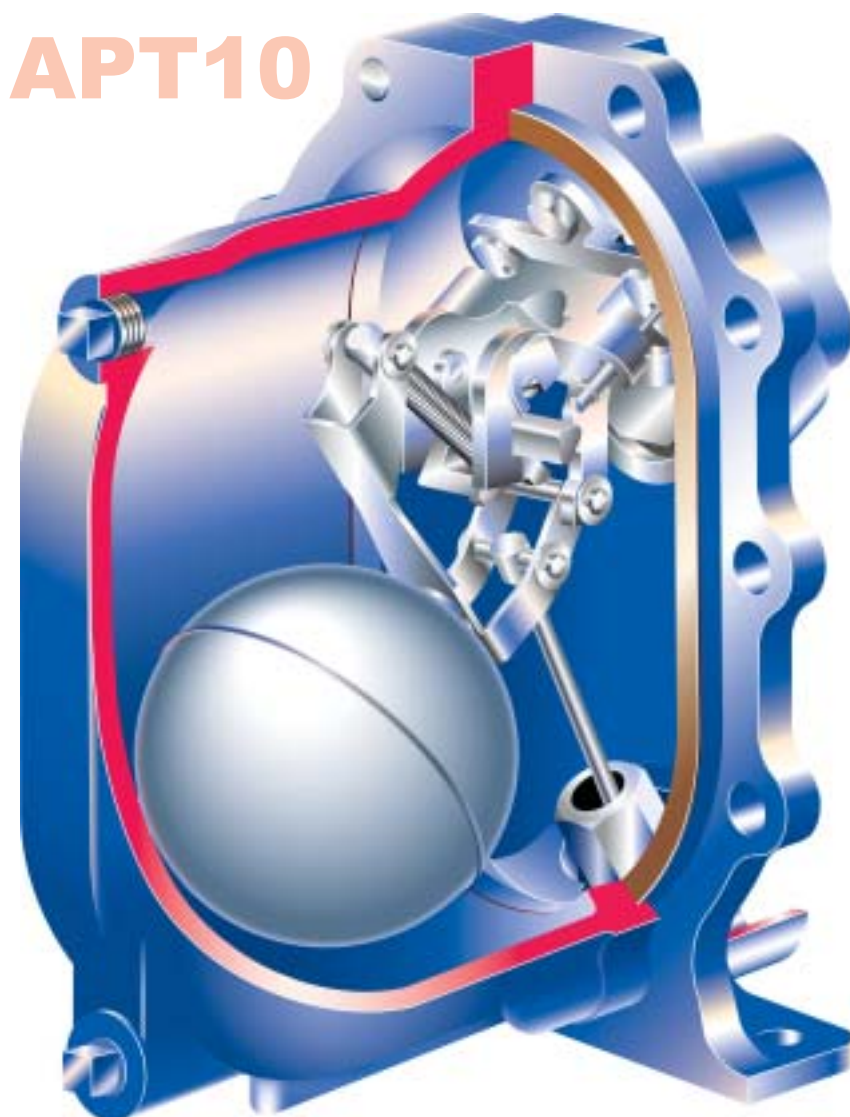
Screwed BSP / NPT connections, with 1/2" screwed BSP or NPT motive fluid connections.

the APT14 has the option of

Flanged PN16, ANSI 150, JIS/KS 10, with 1/2" screwed BSP or NPT motive fluid connections.

Compactness is the key

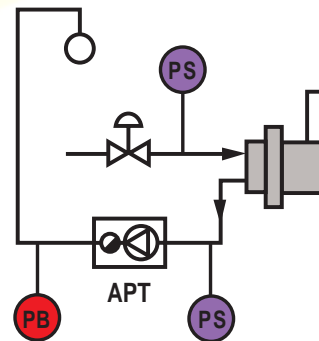
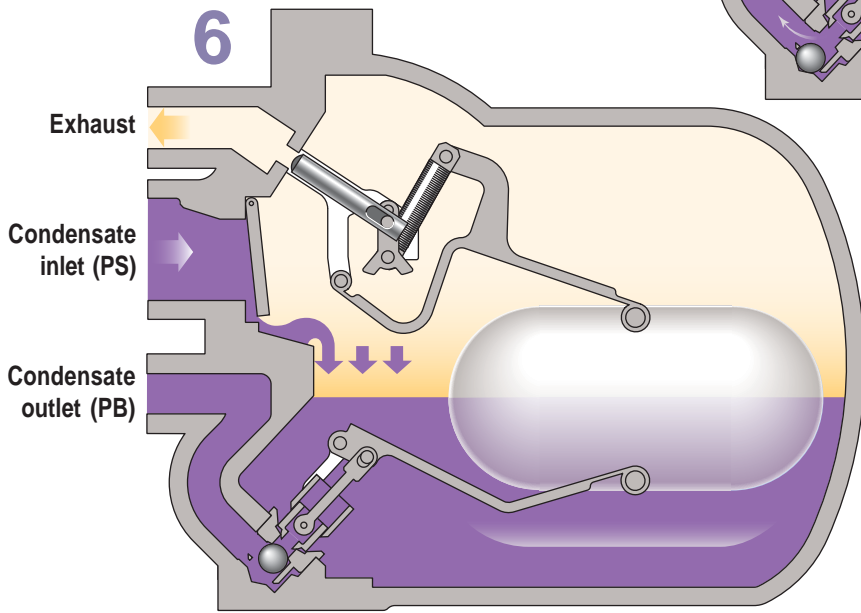
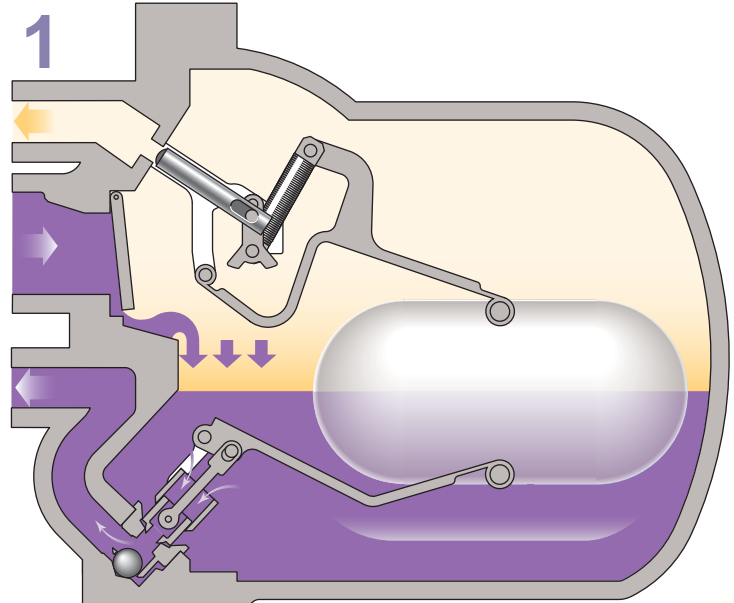
The APT's are unique, from their compact size to their patent applied for mechanisms. No other pressure operated pumps or traps in the world can offer **all** of the benefits shown on these pages.



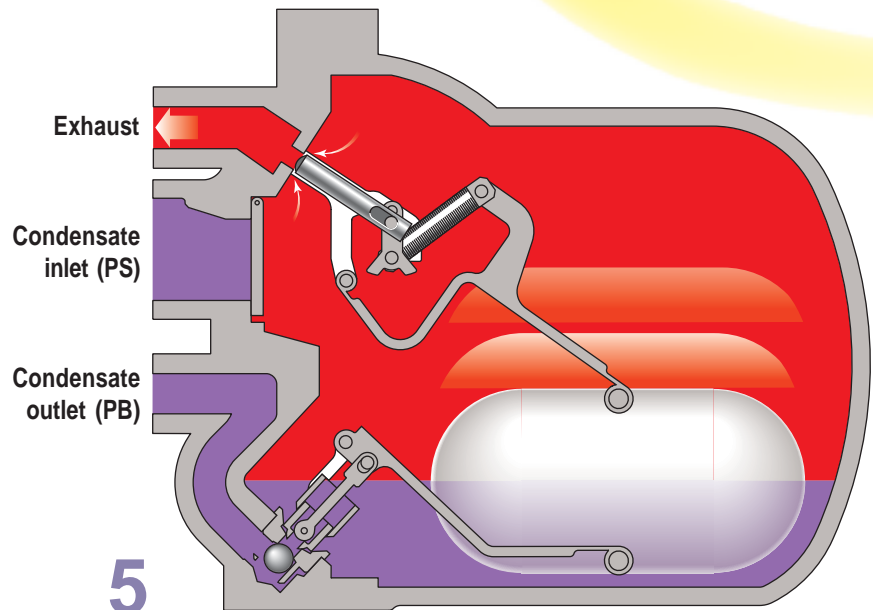
The working cycle of

- 1** Both the APT10 and APT14 automatic pump traps operate on a positive displacement principle. Condensate enters the body through the inlet swing check valve causing the float to rise. The float is connected to the trap mechanism via a multi-link pivot. If the upstream system pressure PS is sufficient to overcome the back pressure PB (see below), the build up of condensate will be discharged through the opening two stage trap mechanism. In this way, the float will automatically modulate according to the rate of condensate entering the APT, controlling the rate of opening and closure of the trap.

- 6** As the pressure inside the APT equalises with the condensate inlet pressure through the open exhaust valve, condensate re-enters via the inlet swing check valve. At the same time the outlet ball check valve ensures no condensate can drain back into the main chamber and the trapping or pumping cycle begins again.

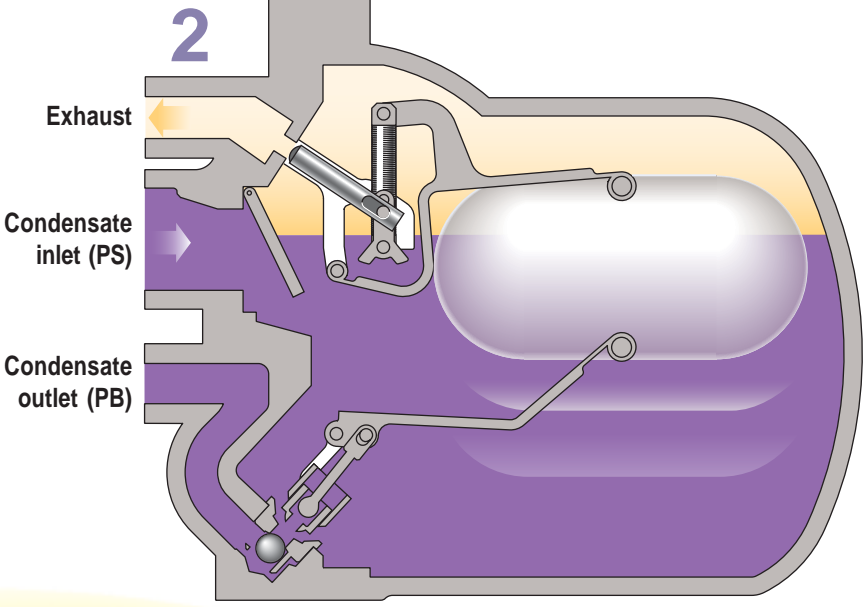


- 5** As the condensate level falls within the main chamber, the float re-engages the change over linkage, causing the motive inlet to close and the exhaust valve to open.

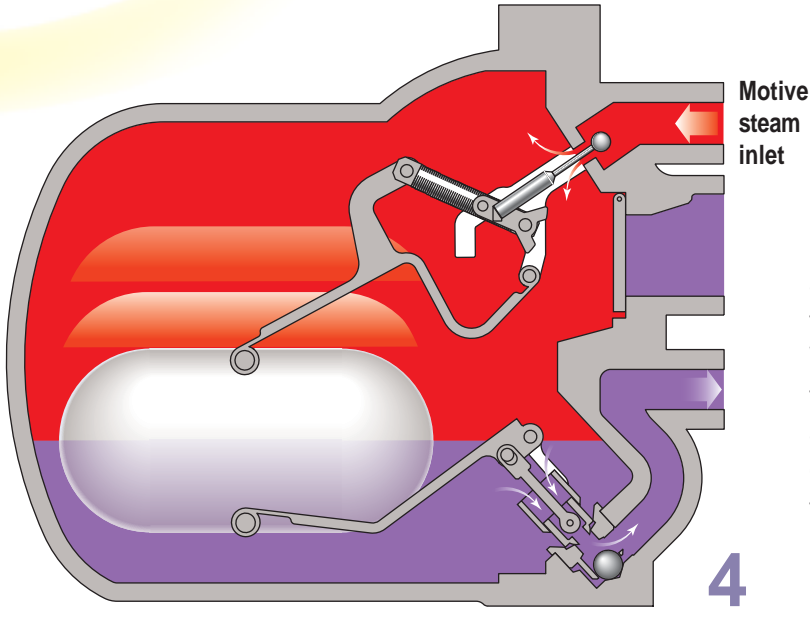
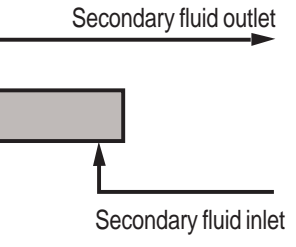
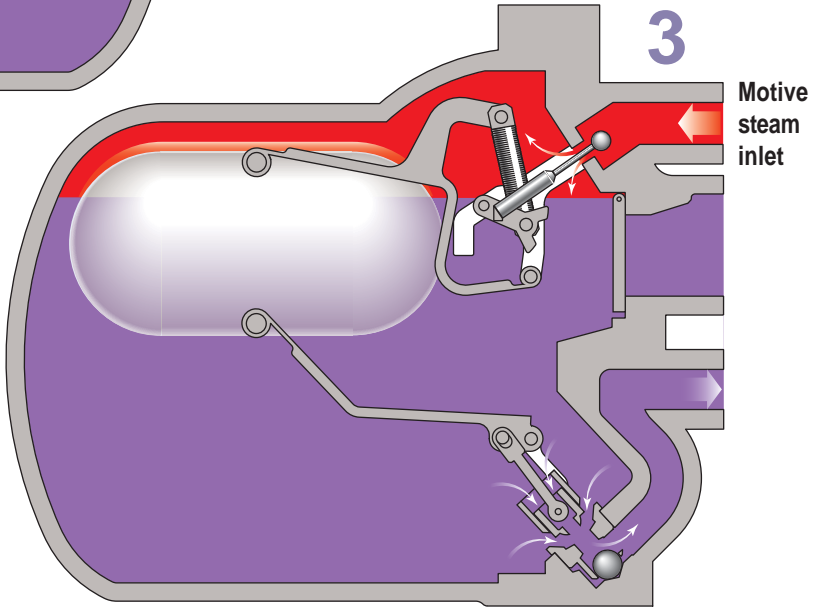


the APT10 and APT14

2 With some temperature controlled equipment, it is possible for the system pressure PS to be lower than the back pressure at PB. If this occurs a standard trap will stall allowing the condensate to flood the equipment being drained.



3 However, with the APT, the condensate simply fills the main chamber - lifting the float until the changeover linkage is engaged, opening the motive inlet and closing the exhaust valve.



4 The snap action mechanism ensures a rapid change from the trapping mode to the active pumping mode. With the motive inlet valve open, the pressure in the APT increases above the total back pressure and the condensate is forced out through the trap seat into the plant's return system.

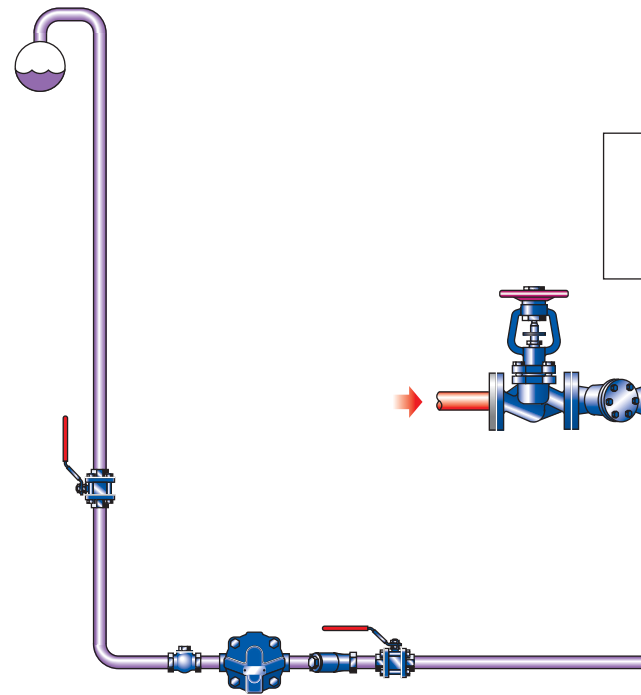
Effective condensate drainage and removal is

Condensate recovery

Most condensate recovery is carried out using steam traps, which use differential pressure to discharge condensate back to the boiler house. If a higher back pressure exists in the return lines or they are simply mounted in an elevated position, then a steam trap will stall allowing condensate to flood back to the process. (For further technical information refer to Spirax Sarco's technical reference guide TR-GCM-23 'Condensate removal from heat exchangers').

Condensate removal

When the steam trap has stalled, an additional motive force is needed to actively remove the condensate from the process. Active condensate removal provides stable operating conditions, giving improved efficiency and prolonged equipment life.



The APT provides a total solution

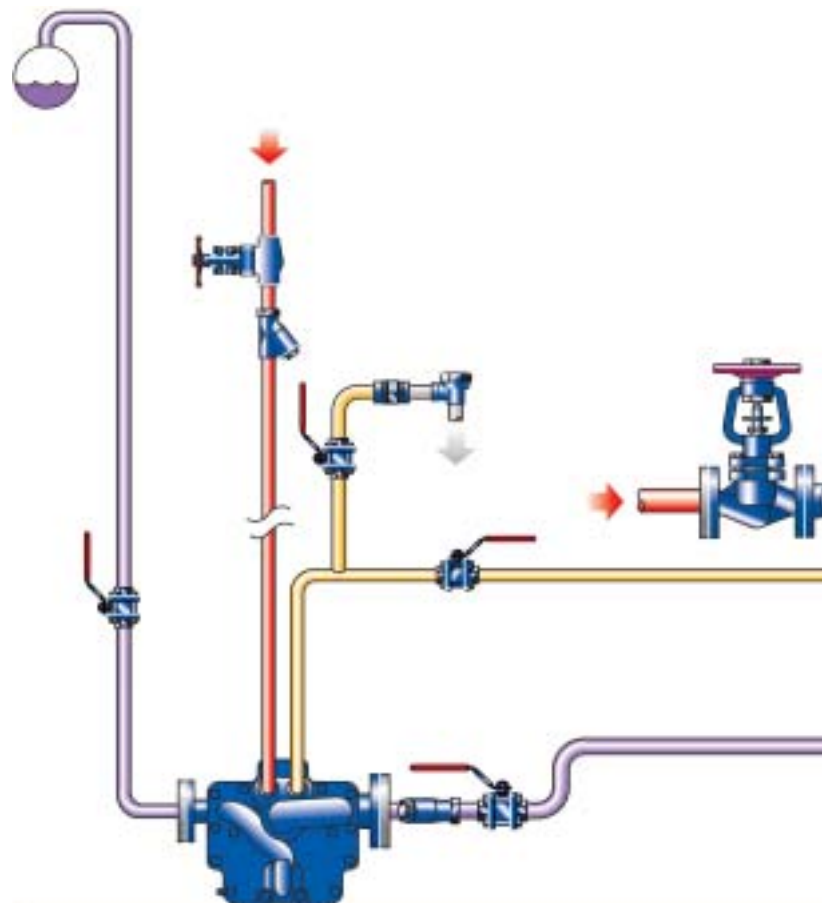
Spirax Sarco's unique and innovative solution to condensate drainage and removal problems comes complete in a simple and compact package.

APT's provide unrivalled control of steam utilising equipment, offering dual benefits of process efficiency and extended plant life.

Simple to size, convenient to install, an APT forms an integral part of process and heating equipment drainage. These compact, fully automatic pump traps will ensure process plant or equipment remains totally drained of condensate under all operating conditions - even vacuum - optimising thermal efficiency of the heat exchange interface.

Efficient

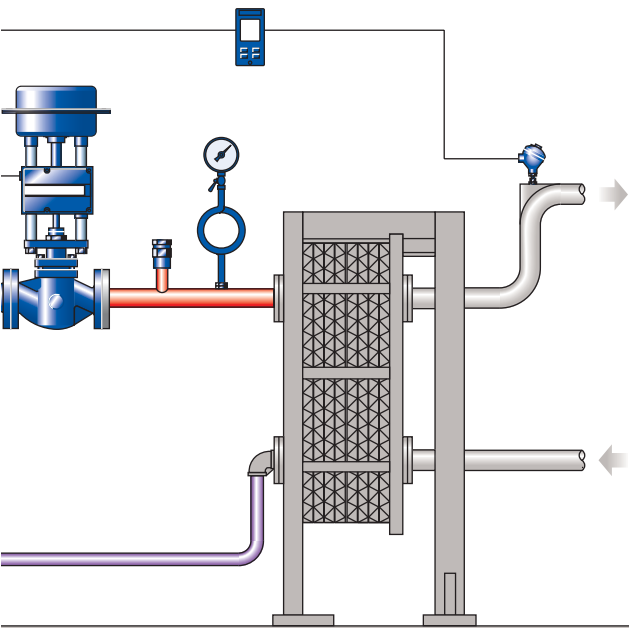
As the APT is designed for closed loop or sealed applications, there is no escape of steam to the plant room and no energy loss from flash steam, in fact, even the steam used for the motive supply is recycled back into the system.



Optimum plant efficiency

Effective condensate drainage and removal

s essential for efficient steam plant operation



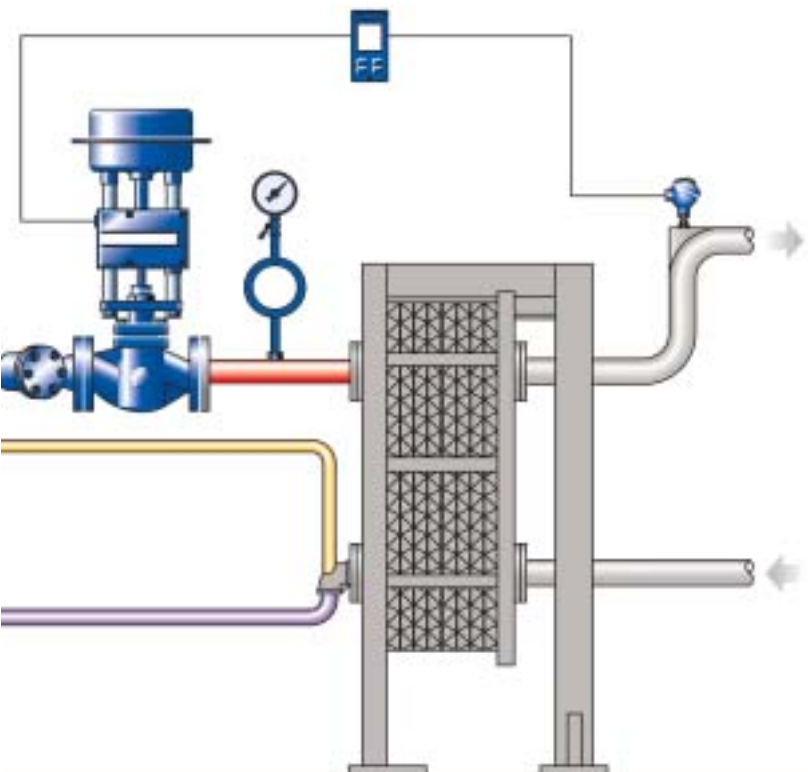
Problems

These can be some of the problems with simply trapping a heat exchanger

- Poor heat transfer !
- Irregular temperature control !
- Corrosion !
- Noise and waterhammer !
- Tube failure !
- High maintenance costs !

All too often these problems have remained unsolved because no fully engineered compact system was available.

ution in one compact product



Solution

These products are specifically designed to automatically recover and remove condensate, the instant it forms.

They provide the unique opportunity to solve all condensate handling problems.

The result

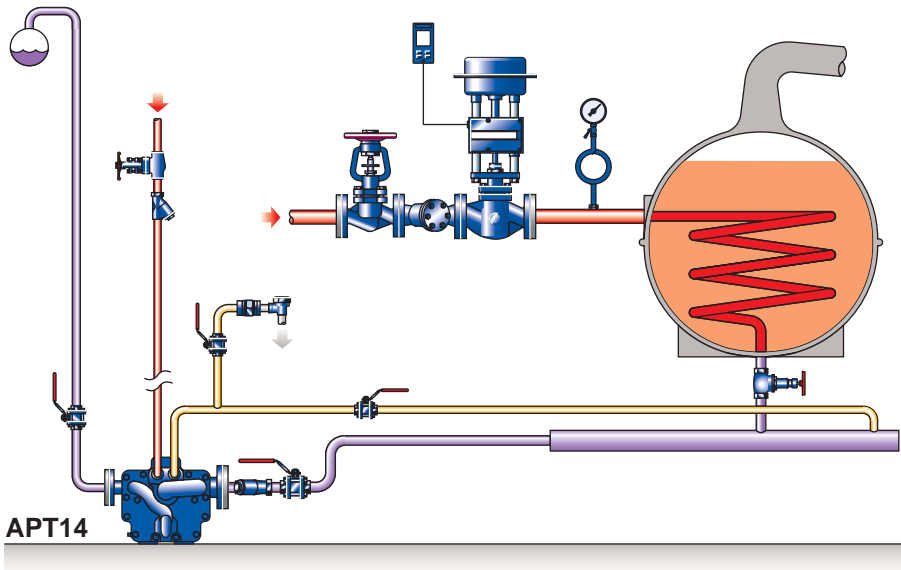
The APT will ensure your equipment operates as efficiently as possible - lowering energy consumption of the plant and allowing the process to run at optimum conditions - resulting in:

- Reduced costs.
- Increased productivity.
- Reduced downtime.
- Quieter equipment operation.

y reduces running costs.

removal is crucial for peak performance.

Typical applications



Condensate removal from process vessels and heat exchangers
 Designed for closed or sealed systems especially where space is limited.
 Removal of condensate under all pressure conditions ensures stable operating temperatures of the heat exchange interface.
 Tube corrosion, noise and waterhammer are all avoided - extending equipment life.

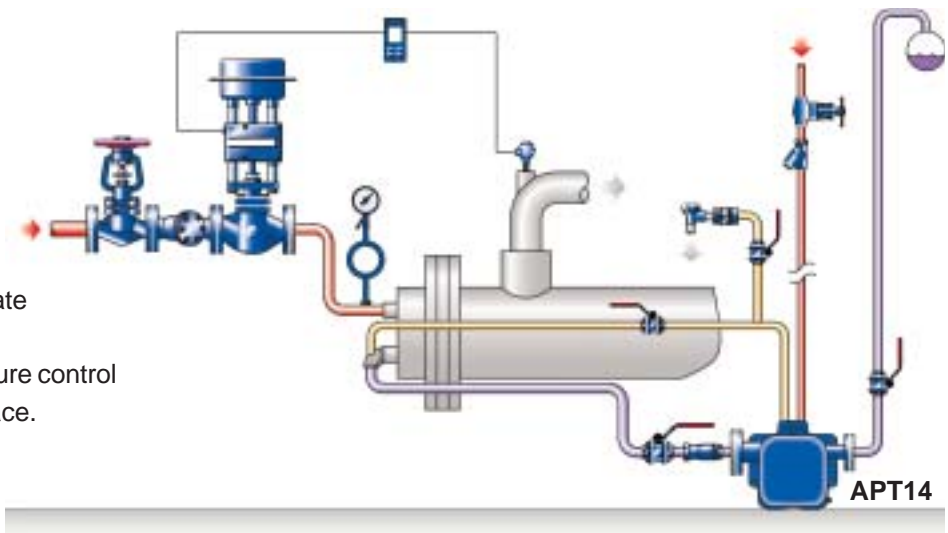
Condensate removal from tube heat exchangers.

(Closed system) -

the APT is simply connected to the outlet of tube heat exchanger.

No need for vacuum breakers

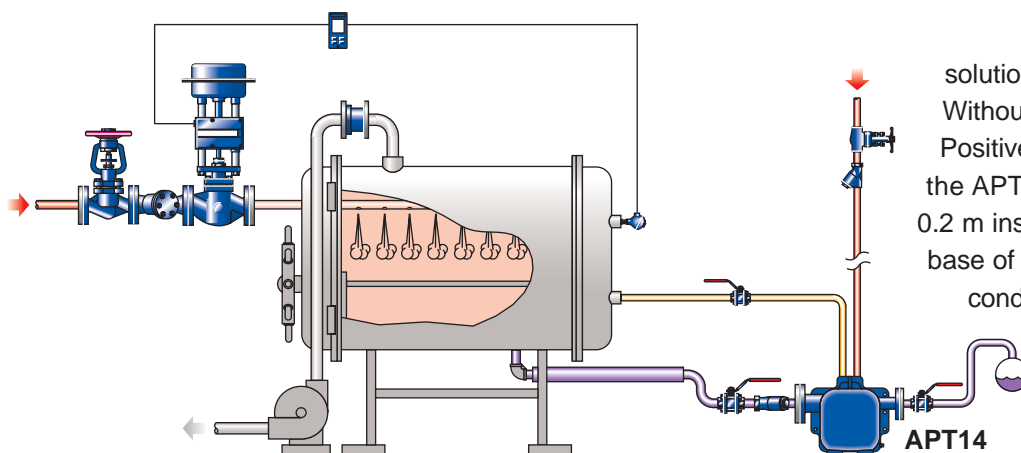
- the APT will drain condensate under all load conditions
- giving exceptional temperature control at the heat exchange interface.



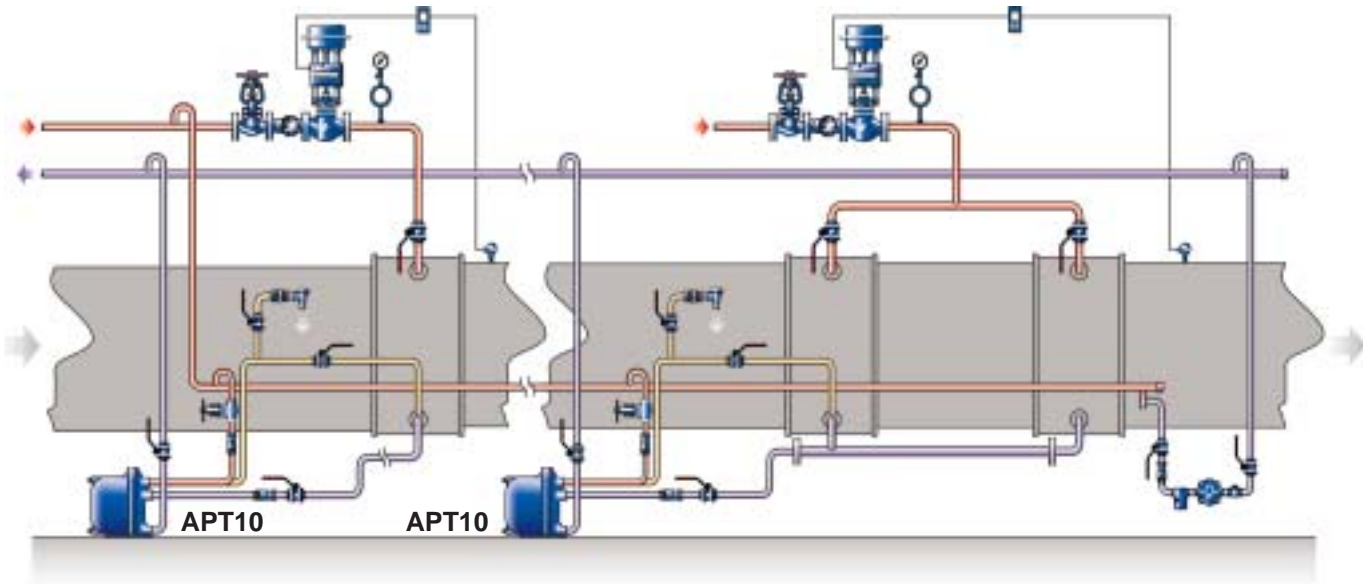
Condensate removal from vacuum equipment (Closed system) -

Simple and efficient

solution to a difficult problem. Without the need for high Net Positive Suction Head NPSH, the APT will operate with only 0.2 m installation head from the base of the pump, and remove condensate from a vacuum vessel, discharging it to either high or low level condensate return lines.*



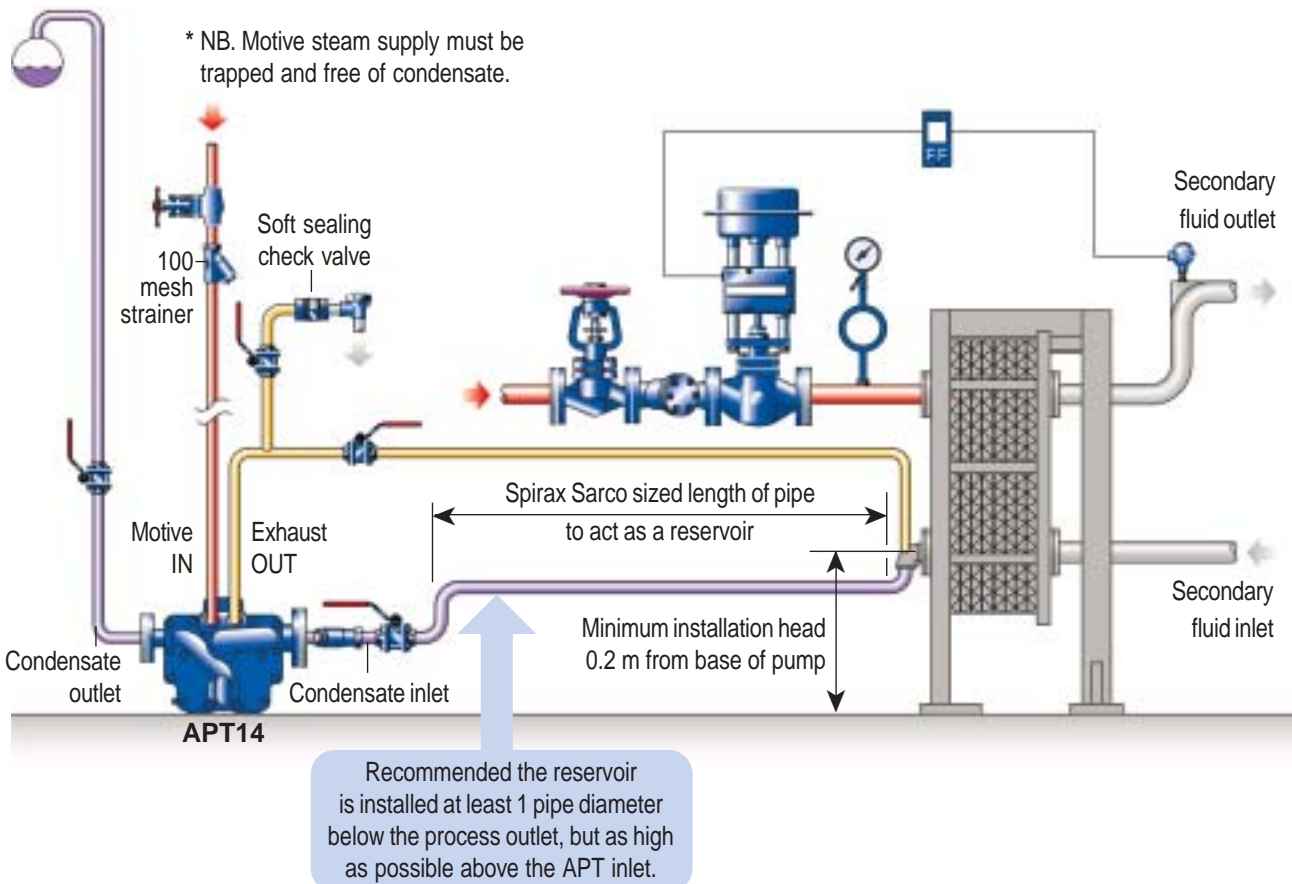
* Please note: These are typical applications only and some components have been omitted for clarity. Contact Spirax Sarco for full installation details.



**Condensate removal from multi-heater applications
(Closed system) -**

The APT can be used in single or multi-heater installations supplied by one control valve - as long as the total connected load is within the APT's capacity. Heater batteries are particularly prone to corrosion and freezing due to condensate retention. The APT provides the complete solution to traditional Air Handling Unit problems, and is ideal for any installation where head room is at a premium.

Recommended installation



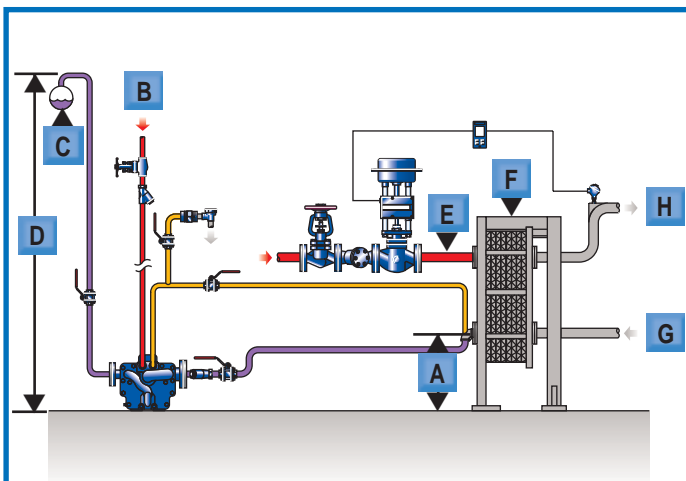
How to size the APT Simply contact your Spirax Sarco

Spirax Sarco will ensure that the APT is accurately matched to your process and will provide you with a detailed sizing chart, tailored to your specific application.

Providing the information below is known, we can even provide you with confirmation over the telephone and fax you your specific chart.

Alternatively arrange a visit for your local Spirax Sarco representative who can provide detailed APT sizing information for all your specific needs.

To help us size an APT for your application, up to 4 000 kg/h, simply provide us with the following information:-



- A** Installation head available from the base of the pump to the centreline of the heat exchanger / process condensate outlet. m
- B** Motive steam pressure available to power the pump trap. bar g
- C** Pressure in the condensate return system. bar g
- D** Height of condensate return from floor level. m
- E** Heat exchanger full load operating pressure. bar g
- F** Maximum steam load on the heat exchanger. kg/h
- G** Minimum secondary fluid temperature. °C
- H** Maximum controlled temperature of secondary fluid. °C



agent who can size an APT, for your specific needs.



Range and options

Automatic pump trap	Type	APT10	APT14
Body material		SG iron GGG 40.3 / ASTM A395	SG iron GGG 40.3 / ASTM A395
Body design rating		PN10	PN16
Nominal size		DN20 (¾")	DN25 (1")
Inlet / outlet connections		Inlet / outlet DN20 (¾")	Inlet DN40 (1½") / outlet DN25 (1")
	Screwed	BSP, NPT	BSP, NPT
	Flanged	-	PN16, ANSI 150, JIS / KS10
Motive fluid connections		Motive inlet / exhaust DN15 (½")	Motive inlet / exhaust DN15 (½")
	Screwed	BSP, NPT	BSP, NPT
Self-contained stainless steel pump mechanism		Minimum installation head from base of the pump 0.2 m	
Self-contained stainless steel trap mechanism		Float operated single stage	Float operated two stage
Self-contained stainless steel check valves		Inlet - swing check, outlet - ball check	Inlet - swing check, outlet - ball check
Maximum operating pressure		2.0 bar g	13.8 bar g
Maximum back pressure		1.9 bar g	5.0 bar g
Maximum operating temperature		133°C	198°C

Nominal capacities

Pump discharge / cycle		2.1 litres	5.0 litres
Maximum trapping capacity		735 kg/h	4 000 kg/h
Maximum pumping capacity		405 kg/h	1 100 kg/h
Reference conditions	• Total back pressure	0.5 bar g	1.0 bar g
	• Motive pressure	2.0 bar g	5.0 bar g
	• Installation head	1 m	1 m

Dimensions / weights (approximate) in mm and kg

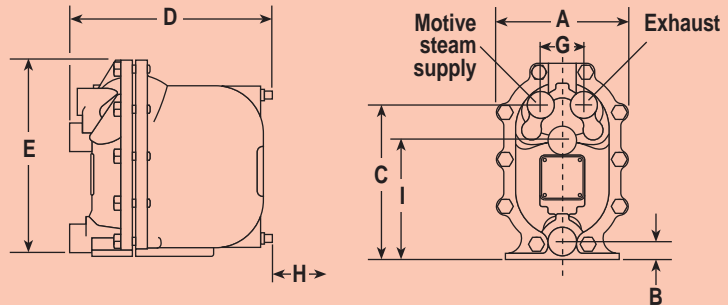
Type	A	B	C	D	E	F	G	H	I	Weight
APT10 Screwed	187	23	223	266	273	-	57	225	171	14
APT14 Screwed	350	198	246	382	304	157	57	250	198	45
APT14 Flanged	389	198	246	382	304	157	57	250	198	45

Typical specification

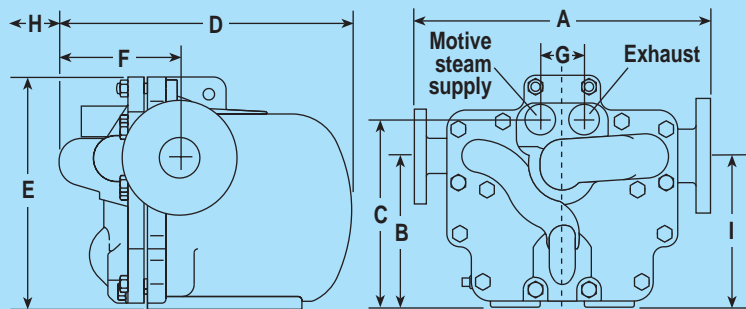
APT10 - The pump trap shall be a Spirax Sarco automatic pump trap type APT10 operated by steam to 2 bar g. No electrical energy shall be required. Body construction from SG iron (DIN 1693 GGG 40.3 dual certified with ASTM A395) with a swing type inlet check valve and ball type outlet check valve. The internal trap mechanism shall contain a stainless steel float connected to a single stage trap, while the pump mechanism shall be a stainless steel single tension spring snap-action device. The pump, trap, and check valve mechanisms shall be incorporated into the same body envelope with no external seals or glands and shall be capable of operating with a minimum of 200 mm installation head from the base of the unit.

APT14 - The pump trap shall be a Spirax Sarco automatic pump trap type APT14 operated by steam to 13.8 bar g. No electrical energy shall be required. Body construction from SG iron (DIN 1693 GGG 40.3 dual certified with ASTM A395) with a swing type inlet check valve and ball type outlet check valve. The internal trap mechanism shall contain dual stainless steel floats connected with a two stage trap, while the internal pump mechanism shall be a stainless steel single tension spring snap-action device. The pump, trap, and check valve mechanisms shall be incorporated within the same body envelope with no external seals or glands and shall be capable of operating with a minimum of 200 mm installation head from the base of the unit.

APT10



APT14



Some of the products may not be available in certain markets.

Spirax-Sarco Limited, Charlton House,
Cheltenham, Gloucestershire, GL53 8ER UK.
Tel: +44 (0)1242 521361 Fax: +44 (0)1242 573342
E-mail: Enquiries@SpiraxSarco.com
Internet: www.SpiraxSarco.com

© Copyright 2000 Spirax Sarco is a registered trademark of Spirax-Sarco Limited

spirax sarco

SB-P612-01

ST Issue 4